

IOWA
HUNGER
SUMMIT



Organized by the World Food Prize

Ninth Annual Iowa Hunger Summit

Oct. 13th 2015

Health and Global Change

Dr. Yogi Shah MD, MPH

Des Moines University

Health and (Global) Climate Change

Dr. Yogi Shah MD, MPH

Des Moines University

What would life be like without
coffee?

Most consumed coffee species, Arabica, could
be extinct in the wild by 2080.

THE LANCET

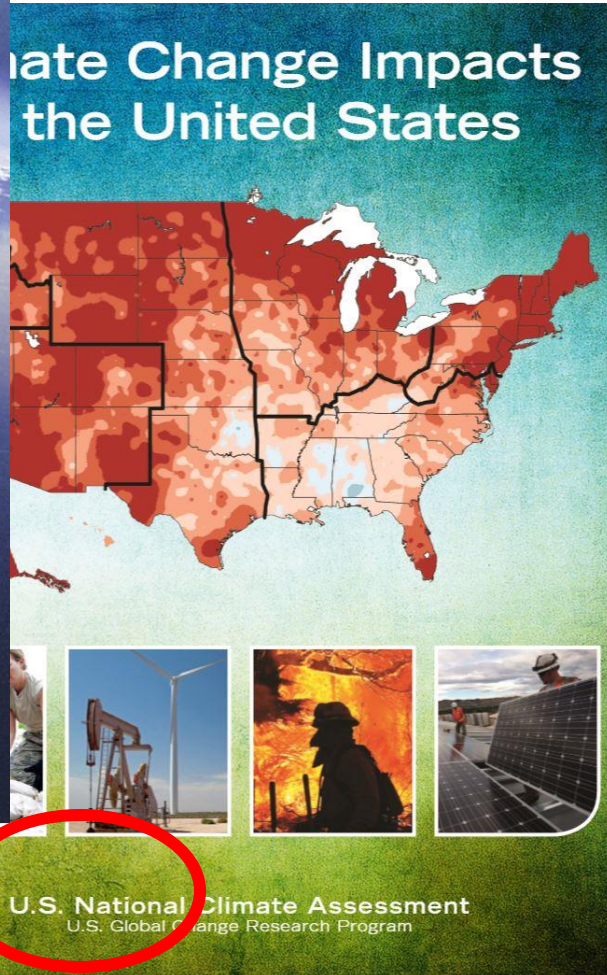
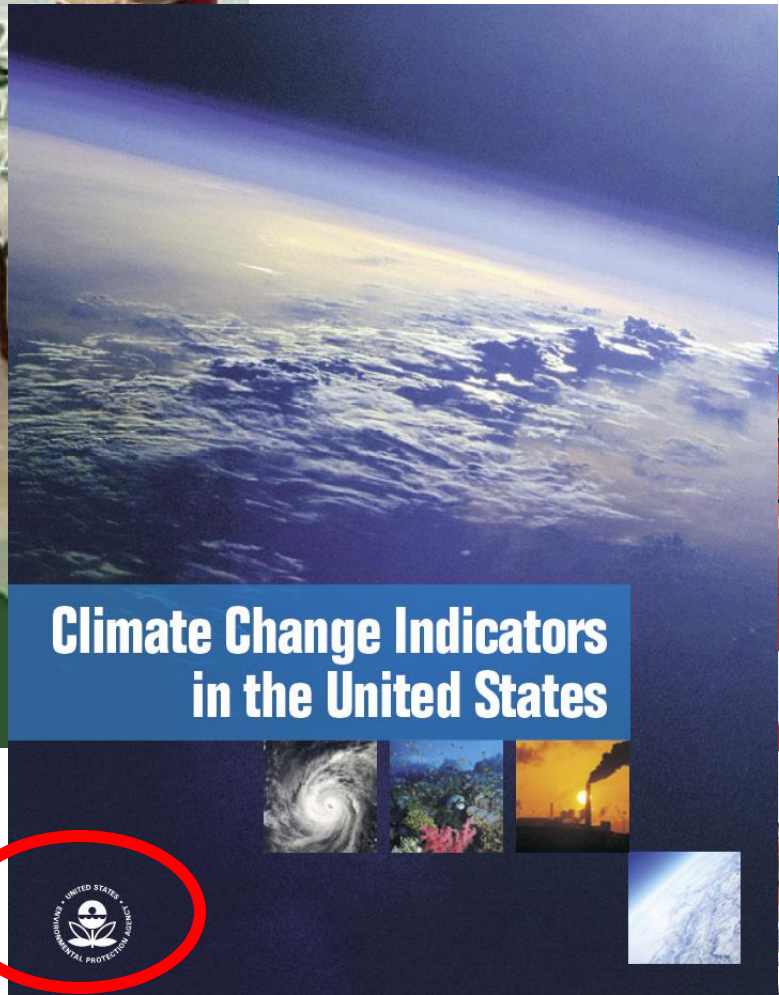
Volume 373 · Number 9676 · Pages 1659-1734 · May 16-22, 2009

www.thelancet.com

“Climate change is the biggest global health threat of the 21st century.”

See The Lancet Commissions page 1693



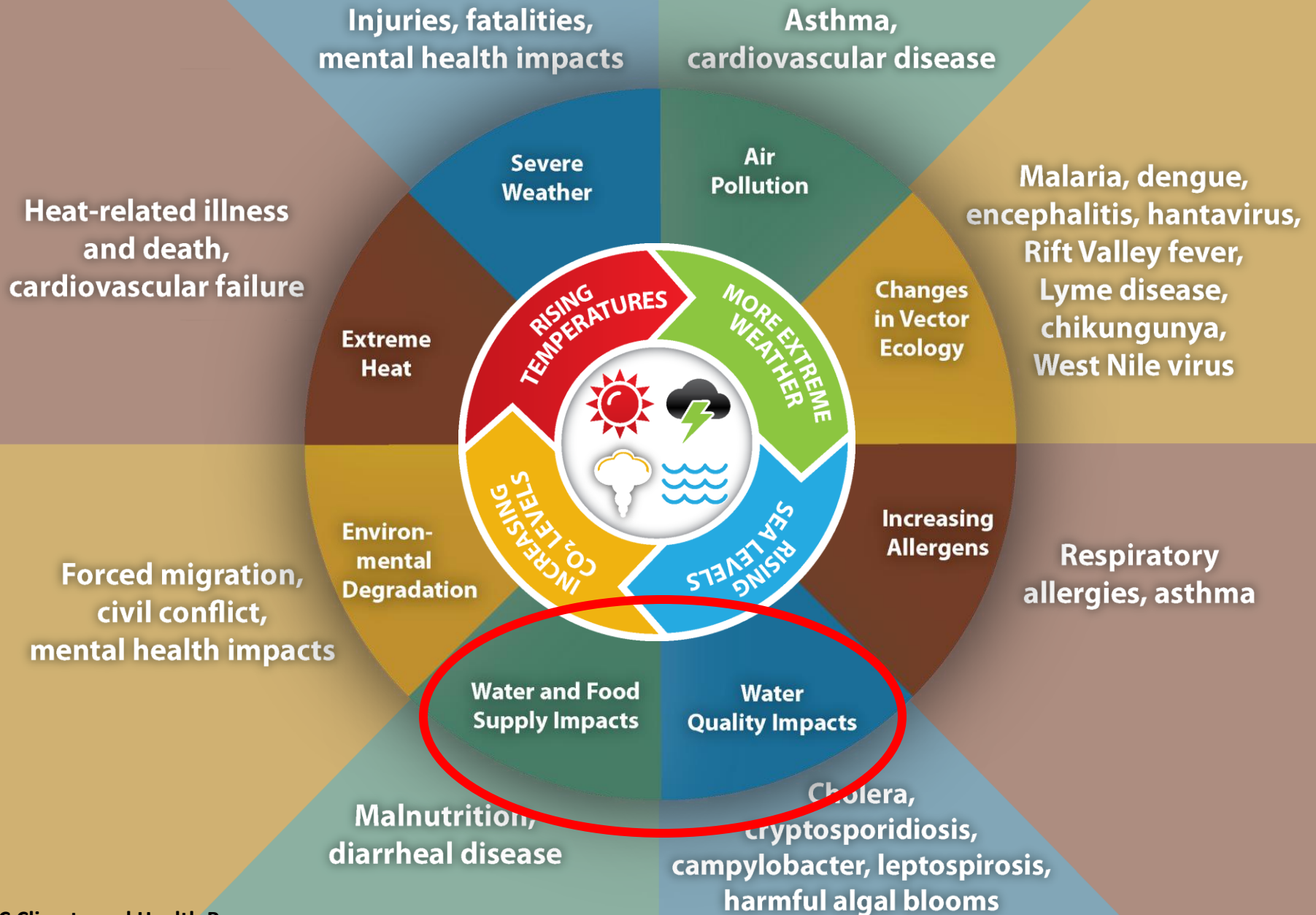


Sculpture by Issac Cordal in Berlin

"Politicians discussing global warming" Source Sierra Club



Impact of Climate Change on Human Health



Water Quality Impacts

Water and Food Supply Impacts

MOST VULNERABLE AT MOST RISK

It would take 3 billion gallons of water per day to support 6 billion people



Which is the equivalent of the amount of water used to irrigate the world's golf courses.

<http://www.un.org/>

Agriculture is the largest user of water, accounting for **70%** of total water use.



By 2050, agriculture will need to produce 60% more food globally and 100% more in developing countries to feed the world.

Climage change negatively impacts
freshwater sources.



780 million people – 11% of the world
– do not have access to an adequate
water source.

The average American uses
176 gallons of water per



The average African family uses
5 gallons a day

<http://www.lboro.ac.uk>

Did you know that the AVERAGE AMERICAN uses

2,000

GALLONS OF WATER A DAY



OUR DIETS



634 GALLONS
to make one burger



37 GALLONS
for one cup of coffee



The U.S. footprint is

2X

THE GLOBAL

AVERAGE



**Over 40 billion work hours are lost
in Africa each year-fetch water**



**African Women walk an average of 3.7
miles to collect water each day and carry
44 pounds of water home on their heads.**

<http://www.lboro.ac.uk>

Diarrhea related to unsanitary water has killed more children than all people lost in battle in World War II.



2,200 children die every day as a result of diarrheal diseases. This amounts to **11%** of the **7.6 million** deaths of children under the age of five.

YOGESH.SHAH@DMU.EDU